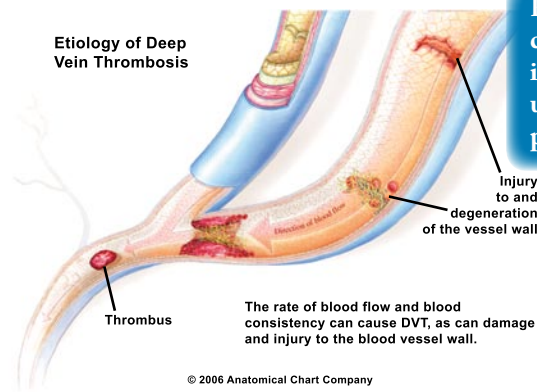


5th 453.4 Venous embolism and thrombosis of deep vessels of lower extremity



Richly-detailed, full-color anatomical illustrations facilitate understanding and proper code selection

453.40 Venous embolism and thrombosis of unspecified deep vessels of lower extremity

Deep vein thrombosis NOS
DVT NOS

453.41 Venous embolism and thrombosis of deep vessels of proximal lower extremity

Femoral
Iliac
Popliteal
Thigh
Upper leg NOS

453.42 Venous embolism and thrombosis of deep vessels of distal lower extremity

Calf
Lower leg NOS
Peroneal
Tibial

453.8 Of other specified veins

Excludes cerebral (434.0-434.9)
coronary (410.00-410.92)
intracranial venous sinus (325)
nonpyogenic (437.6)
mesenteric (557.0)
portal (452)
precerebral (433.0-433.9)
pulmonary (415.19)

453.9 Of unspecified site

Embolism of vein
Thrombosis (vein)

4th 454 Varicose veins of lower extremities

Excludes that complicating pregnancy, childbirth, or the puerperium (671.8)

454.0 With ulcer **A**

Varicose ulcer of lower extremity [any part] or of unspecified site
Any condition classifiable to 454.0 with ulcer and inflammation as ulcerated

454.1 With inflammation **A**

Stasis dermatitis
Varicose veins with inflammation of lower extremity [any part] or of unspecified site
Any condition classifiable to 454.9 with inflammation or specified as inflamed

454.2 With ulcer and inflammation **A**

Varicose veins with ulcer and inflammation of lower extremity [any part] or of unspecified site
Any condition classifiable to 454.9 with ulcer and inflammation

454.8 With other complications

Edema
Pain
Swelling
Asymptomatic varicose veins **A**
Hemorrhage of lower extremity [any part] or of unspecified site
Varicose veins NOS
Varicose veins of lower extremity [any part] or of unspecified site
Varix of lower extremity [any part] or of unspecified site

4th 455 Hemorrhoids

Includes hemorrhoids (anus) (rectum)
piles
varicose veins, anus or rectum

Excludes that complicating pregnancy, childbirth, or the puerperium (671.8)

455.0 Internal hemorrhoids without mention of complication

455.1 Internal thrombosed hemorrhoids

455.2 Internal hemorrhoids with other complication

Internal hemorrhoids:
bleeding
prolapsed
strangulated
ulcerated

ICD-10-CM equivalents, placed discreetly beneath the most commonly used ICD-9 codes, ease the transition to the new diagnostic code set

455.3 External hemorrhoids with other complication

184.22 External hemorrhoids without complication

455.4 External thrombosed hemorrhoids

455.5 External hemorrhoids with other complication

External hemorrhoids:
bleeding
prolapsed
strangulated
ulcerated

455.6 Unspecified hemorrhoids without mention of complication

Hemorrhoids NOS

455.7 Unspecified thrombosed hemorrhoids

Thrombosed hemorrhoids, unspecified whether internal or external

455.8 Unspecified hemorrhoids with other complication

Hemorrhoids, unspecified whether internal or external:
bleeding
prolapsed
strangulated
ulcerated

455.9 Residual hemorrhoidal skin tags

Skin tags, anus or rectum

4th 456 Varicose veins of other sites

456.0 Esophageal varices with bleeding

456.1 Esophageal varices without mention of bleeding

5th 456.2 Esophageal varices in diseases classified elsewhere

Code first underlying disease, as:
cirrhosis of liver (571.0-571.9)
portal hypertension (572.3)

456.20 **With bleeding**

456.21 **Without mention of bleeding**

456.3 Sublingual varices

456.4 Scrotal varices ♂

Varicocele

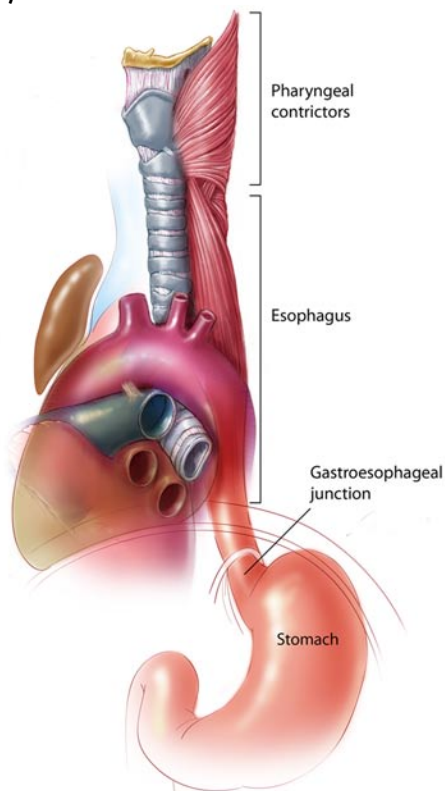
456.5 Pelvic varices

Varices of broad ligament

456.6 Vulval varices ♀

Varices of perineum

DISEASES OF ESOPHAGUS, STOMACH, AND DUODENUM (530-538)



© 2008 Fairman Studios, LLC. All Rights Reserved.

4th 530 Diseases of esophagus

Excludes esophageal varices (456.0-456.2)

530.0 Achalasia and cardiospasm

- Achalasia (of cardia)
- Aperistalsis of esophagus
- Megaesophagus

Excludes congenital cardiospasm (750.7)

5th 530.1 Esophagitis

- Abscess of esophagus
- Esophagitis:
 - NOS
 - chemical
 - peptic
 - postoperative

In addition to new (●) and revised (▲) code symbols, underlined (new) and ~~strikethrough~~ (deleted) text give users a complete picture of updates to ICD-9

to identify cause, if induced by chemical

ous esophagitis (017.8)

unspecified 77

is NOS

agitis 77

agitis 77

● **530.13 Eosinophilic esophagitis**

530.19 Other esophagitis 77

Abscess of esophagus

5th 530.2 Ulcer of esophagus

- Ulcer of esophagus
 - fungal
 - peptic
- Ulcer of esophagus due to ingestion of:
 - aspirin
 - chemicals
 - medicines

Use additional E code to identify cause, if induced by chemical or drug

530.20 Ulcer of esophagus without bleeding

Ulcer of esophagus NOS

530.21 Ulcer of esophagus with bleeding

Excludes bleeding esophageal varices (456.0, 456.20)

530.3 Stricture and stenosis of esophagus

- Compression of esophagus
- Obstruction of esophagus

Excludes congenital stricture of esophagus (750.3)

530.4 Perforation of esophagus

- Rupture of esophagus

Excludes traumatic perforation of esophagus (862.22, 862.32, 874.4-874.5)

530.5 Dyskinesia of esophagus

- Corkscrew esophagus
- Curling esophagus
- Esophagospasm
- Spasm of esophagus

Excludes cardiospasm (530.0)

530.6 Diverticulum of esophagus, acquired

- Diverticulum, acquired:
 - epiphrenic
 - pharyngoesophageal
 - pulsion
 - subdiaphragmatic
 - traction
 - Zenker's (hypopharyngeal)
- Esophageal pouch, acquired
- Esophagocele, acquired

Excludes congenital diverticulum

530.7 Gastroesophageal laceration-hemorrhage

- Mallory-Weiss syndrome

530.8 Other specified disorders of esophagus

530.81 Esophageal reflux 77

K21.9 Gastro-esophageal reflux disease without esophagitis

- Gastroesophageal reflux

Excludes reflux esophagitis (530.11)

530.82 Esophageal hemorrhage

Excludes hemorrhage due to esophageal varices (456.0-456.2)

530.83 Esophageal leukoplakia

530.84 Tracheoesophageal fistula

Excludes congenital tracheoesophageal fistula (750.3)

530.85 Barrett's esophagus

530.86 Infectious esophagitis

Use additional E code to identify drug, if drug-induced

530.87 Mechanical esophagitis

Mallory-Weiss syndrome

530.89 Other specified disorders of esophagus

Excludes Plummer-Riley syndrome (280.0)

530.9 Unspecified disorder of esophagus

4th 531 Gastric ulcer

- Includes** ulcer (peptic):
 - prepyloric
 - pylorus
 - stomach

Use additional E code to identify drug, if drug-induced

Excludes peptic ulcer NOS (533.0-533.9)

The following fifth-digit subclassification is for use with category 531:

0 without mention of obstruction

1 with obstruction

5th 531.0 Acute with hemorrhage

[0-1]

Code ranges in the header and page ends make locating codes both easy and efficient

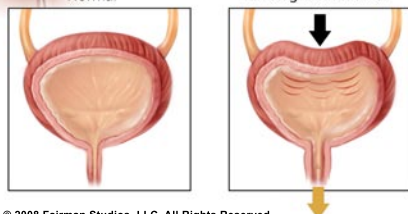
530 – 531.0

625.6 Stress incontinence, female 4⁹, 5⁰ ♀

N39.3 Stress incontinence (female) (ma

Excludes mixed incontinence (788.33)
stress incontinence, male (788.33)

Stress Incontinence



© 2008 Fairman Studios, LLC. All Rights Reserved.

Actual Medicare PQRI
measure numbers at the
code level enable efficient
reporting and help maximize
bonus payments

ner ♀
Dysfunctional or functional uterine hemorrhage NOS
Menstruation:
retained
suppression of
unspecified ♀

5th 625.7 Vulvodynia625.70 Vulvodynia, unspecified ♀
Vulvodynia NOS

625.71 Vulvar vestibulitis ♀

625.79 Other vulvodynia ♀

625.8 Other specified symptoms associated female genital organs ♀

625.9 Unspecified symptom associated with female genital organs ♀

4th 626 Disorders of menstruation and other abnormal bleeding from female genital tract**Excludes** menopausal and premenopausal bleeding (627.0)
pain and other symptoms associated with menstrual cycle (625.2-625.4)
postmenopausal bleeding (627.1)626.0 Absence of menstruation ♀
Amenorrhea (primary) (secondary)626.1 Scanty or infrequent menstruation ♀
Hypomenorrhea
Oligomenorrhea626.2 Excessive or frequent menstruation ♀
Heavy periods
Menometrorrhagia
Menorrhagia
Polymenorrhea**Excludes** premenopausal (627.0)
that in puberty (626.3)626.3 Puberty bleeding ♀
Excessive bleeding associated with onset of menstrual periods
Pubertal menorrhagia626.4 Irregular menstrual cycle ♀
Irregular:
bleeding NOS
menstruation
periods626.5 Ovulation bleeding ♀
Regular intermenstrual bleeding626.6 Metrorrhagia ♀
Bleeding unrelated to menstrual cycle
Irregular intermenstrual bleeding

626.7 Postcoital bleeding ♀

4th 627 Menopausal and postmenopausal disorders**Excludes** asymptomatic age-related (natural) postmenopausal status (V49.81)

627.0 Premenopausal menorrhagia ♀

Excessive bleeding associated with onset of menopause
Menorrhagia:
climacteric
menopausal
preclimacteric

627.1 Postmenopausal bleeding ♀

627.2 Symptomatic menopausal or female climacteric states ♀
Symptoms, such as flushing, sleeplessness, headache, lack of concentration, associated with the menopause627.3 Postmenopausal atrophic vaginitis ♀
Senile (atrophic) vaginitis627.4 Symptomatic states associated with artificial menopause ♀
Postartificial menopause syndromes
Any condition classifiable to 627.1, 627.2, or 627.3 which follows induced menopause

627.8 Other specified menopausal and postmenopausal disorders ♀

Excludes premature menopause NOS (256.31)

627.9 Unspecified menopausal and postmenopausal disorder ♀

4th 628 Infertility, female**Includes** primary
Anovulation
Use additional code for any associated syndrome (252.0-252.7)

Manifestation codes clearly
highlighted with light blue
color bars remind the user
of the need for mandatory
multiple coding

628.1 Of pituitary-hypothalamic origin ♀

Code first underlying disease, as:
adiposogenital dystrophy (253.8)
anterior pituitary disorder (253.0-253.4)

628.2 Of tubal origin ♀

Infertility associated with congenital anomaly of tube
Tubal:
block
occlusion
stenosis
Use additional code for any associated peritubal adhesions (614.6)

628.3 Of uterine origin ♀

Infertility associated with congenital anomaly of uterus
Nonimplantation
Use additional code for any associated tuberculous endometritis (016.7)

628.4 Of cervical or vaginal origin ♀

Infertility associated with:
anomaly or cervical mucus
congenital structural anomaly
dysmucorrhea

628.8 Of other specified origin ♀

628.9 Of unspecified origin ♀

Symbol key located at
the bottom of each page
eliminates any confusion
about the meaning of color
bars and symbols

PERSONS WITH POTENTIAL HEALTH HAZARDS RELATED TO PERSONAL AND FAMILY HISTORY (V10-V19)

Excludes *obstetric patients where the possibility that affected is the reason for observation during pregnancy (655.0-655.9)*

ICD-9-CM Official Guidelines (Chapter 18):

d. Categories of V Codes

4) History (of)

There are two types of history V codes, personal and family. Personal history codes explain a patient's past medical condition that no longer exists and is not receiving any treatment, but that has the potential for recurrence, and therefore may require continued monitoring. The exceptions to this general rule are category V14, Personal history of allergy to medicinal agents, and subcategory V15.0, Allergy, other than to medicinal agents. A person who has had an allergic episode to a substance or food in the past should always be considered allergic to the substance.

Family history codes are for use when a patient has a family member(s) who has had a particular disease that causes the patient to be at higher risk of also contracting the disease.

Personal history codes may be used in conjunction with follow-up codes and family history codes may be used in conjunction with screening codes to explain the need for a test or procedure. History codes are also acceptable on any medical record regardless of the reason for visit. A history of an illness, even if no longer present, is important information that may alter the type of treatment ordered.

The history V code categories are:

V10 Personal history of malignant neoplasm

V12 Personal history of certain other diseases

V13 Personal history of other diseases

Except: V13.4, Personal history of arthritis, and V13.6, Personal history of congenital malformations. These conditions are life-long so are not true history codes.

V14 Personal history of allergy to medicinal agents

V15 Other personal history presenting hazards to health

Except: V15.7, Personal history of contraception.

V16 Family history of malignant neoplasm

V17 Family history of certain chronic disabling diseases

V18 Family history of certain other specific diseases

V19 Family history of other conditions

4th V10 Personal history of malignant neoplasm

Code first any continuing functional activity, such as: carcinoid syndrome (259.2)

5th V10.0 Gastrointestinal tract

History of conditions classifiable to 140-159

V10.00 **Gastrointestinal tract, unspecified**

V10.01 Tongue

V10.02 **Other and unspecified oral cavity and pharynx**

V10.03 Esophagus

V10.04 Stomach

V10.05 Large intestine

V10.06 Rectum, rectosigmoid

V10.07 Liver

V10.09 **Other**

5th V10.1 Trachea, bronchus, and lung

History of conditions classifiable to 162

V10.11 Bronchus and lung

V10.12 Trachea

5th V10.2 Other respiratory and intrathoracic organs

History of conditions classifiable to 160, 161, 163-165

V10.20 **Respiratory organ, unspecified**

V10.21 Larynx

V10.22 Nasal cavities, middle ear, and accessory sinuses

Relevant excerpts from the ICD-9-CM Official Guidelines for Coding and Reporting are presented at the code level

An unique blend of 100% of the official ICD-9-CM code set with innovative value-added features makes MMHSI's 2010 ICD-9-CM indispensable

V10.29 **Other**

V10.3 Breast

History of conditions classifiable to 174 and 175

0.4 Genital organs

History of conditions classifiable to 600-614

V10.40 **Female genital organs, unspecified**

V10.41 Cervix uteri ♀

V10.42 **Other parts of uterus**

V10.43 Ovary ♀

V10.44 **Other female genital organs**

V10.45 **Male genital organ, unspecified ♂**

V10.46 Prostate ♂

V10.47 Testis ♂

V10.48 Epididymis ♂

V10.49 **Other male genital organs ♂**

5th V10.5 Urinary organs

History of conditions classifiable to 188 and 189

V10.50 **Urinary organ, unspecified**

V10.51 Bladder

V10.52 Kidney

Excludes renal pelvis (V10.53)

V10.53 Renal pelvis

V10.59 **Other**

5th V10.6 Leukemia

Conditions classifiable to 204-208

Excludes leukemia in remission (204-208)

V10.60 **Leukemia, unspecified**

V10.61 Lymphoid leukemia

V10.62 Myeloid leukemia

V10.63 Monocytic leukemia

V10.69 **Other**

5th V10.7 Other lymphatic and hematopoietic neoplasms

Conditions classifiable to 200-203

Excludes listed conditions in 200-203 in remission

V10.71 Lymphosarcoma and reticulosarcoma

V10.72 Hodgkin's disease

V10.79 **Other**

5th V10.8 Personal history of malignant neoplasm of other sites

History of conditions classifiable to 170-173, 190-195

V10.81 Bone

V10.82 Malignant melanoma of skin

V10.83 **Other malignant neoplasm of skin**

V10.84 Eye

V10.85 Brain

V10.86 **Other parts of nervous system**

Excludes peripheral, sympathetic, and parasympathetic nerves (V10.89)

V10.87 Thyroid

V10.88 **Other endocrine glands and related structures**

V10.89 **Other**

0.9 Unspecified personal history of malignant neoplasm

Personal history of mental disorder

V11.0 Schizophrenia

Excludes that in remission (295.0-295.9 with fifth-digit 5)

V11.1 Affective disorders

Personal history of manic-depressive psychosis

Excludes that in remission (296.0-296.6 with fifth-digit 5, 6)

V11.2 Neurosis

V11.3 Alcoholism

V11.8 Other mental disorders